

PLAT NO.12 QUAIL RIDGE

(A PLANNED UNIT DEVELOPMENT)

BEING A SUBDIVISION OF A PORTION OF THE NORTHEAST ONE-QUARTER
OF SECTION 36, TOWNSHIP 45 SOUTH, RANGE 42 EAST
PALM BEACH COUNTY, FLORIDA

IN 2 SHEETS SHEET NO. 2

182

CURVE TABLE

No.	Radius	Delta	Arc	Tangent
1.	275'	25° 00' 00"	119.99'	60.97'
2.	1075'	5° 08' 20"	96.42'	48.24'
3.	25'	28° 21' 27"	12.37'	6.32'
4.	50'	141° 14' 37"	123.26'	142.16'
5.	50'	130° 09' 23"	113.58'	107.61'
6.	25'	63° 02' 32"	27.51'	15.33'
7.	1125'	5° 08' 20"	100.90'	50.48'
8.	225'	25° 00' 00"	98.17'	49.88'
9.	300'	18° 07' 18"	94.89'	47.84'
10.	500'	7° 43' 34"	67.42'	33.76'
11.	150'	33° 24' 33"	87.46'	45.02'
12.	110'	50° 03' 03"	96.09'	51.35'
13.	150'	41° 06' 46"	107.63'	56.25'

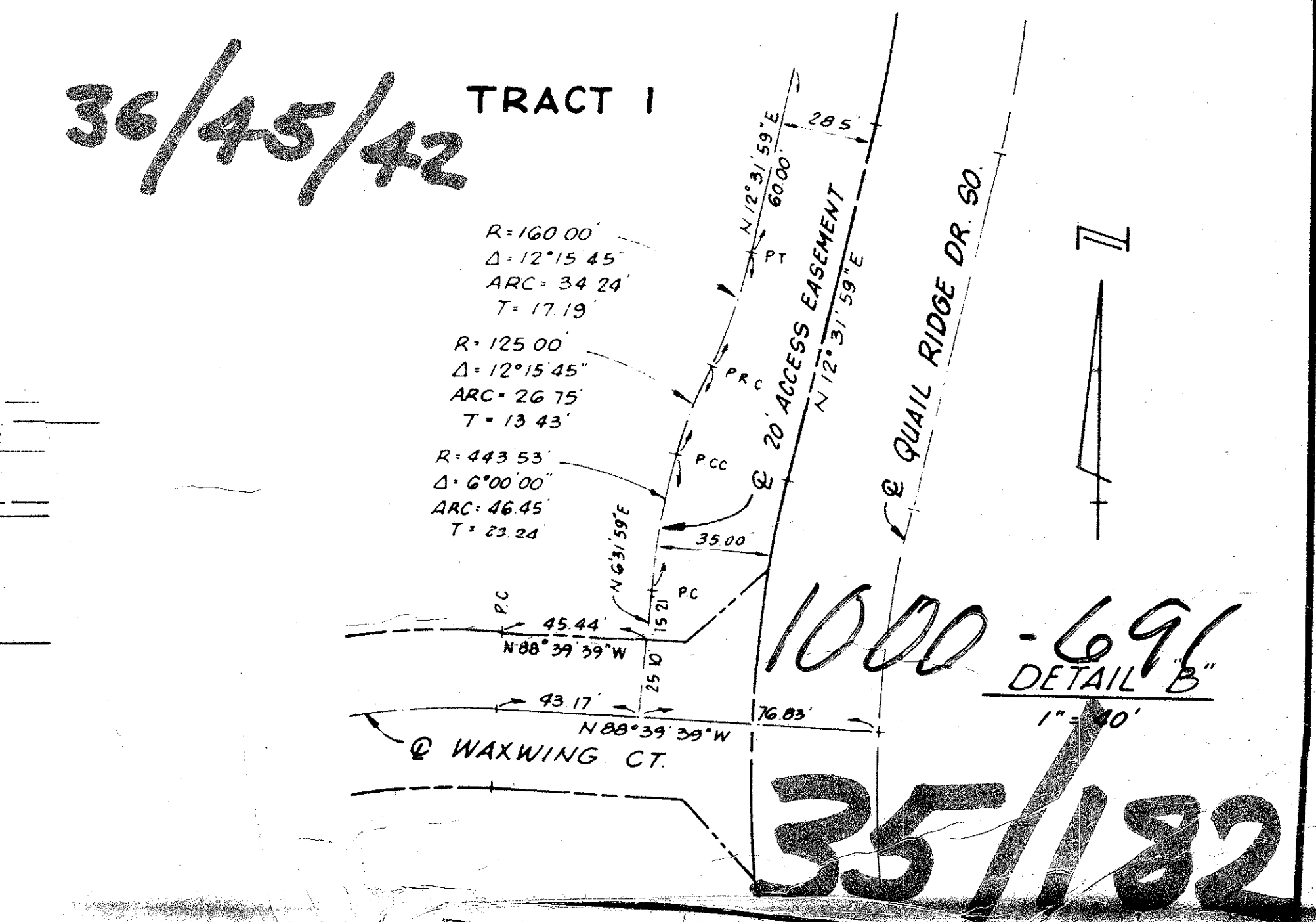
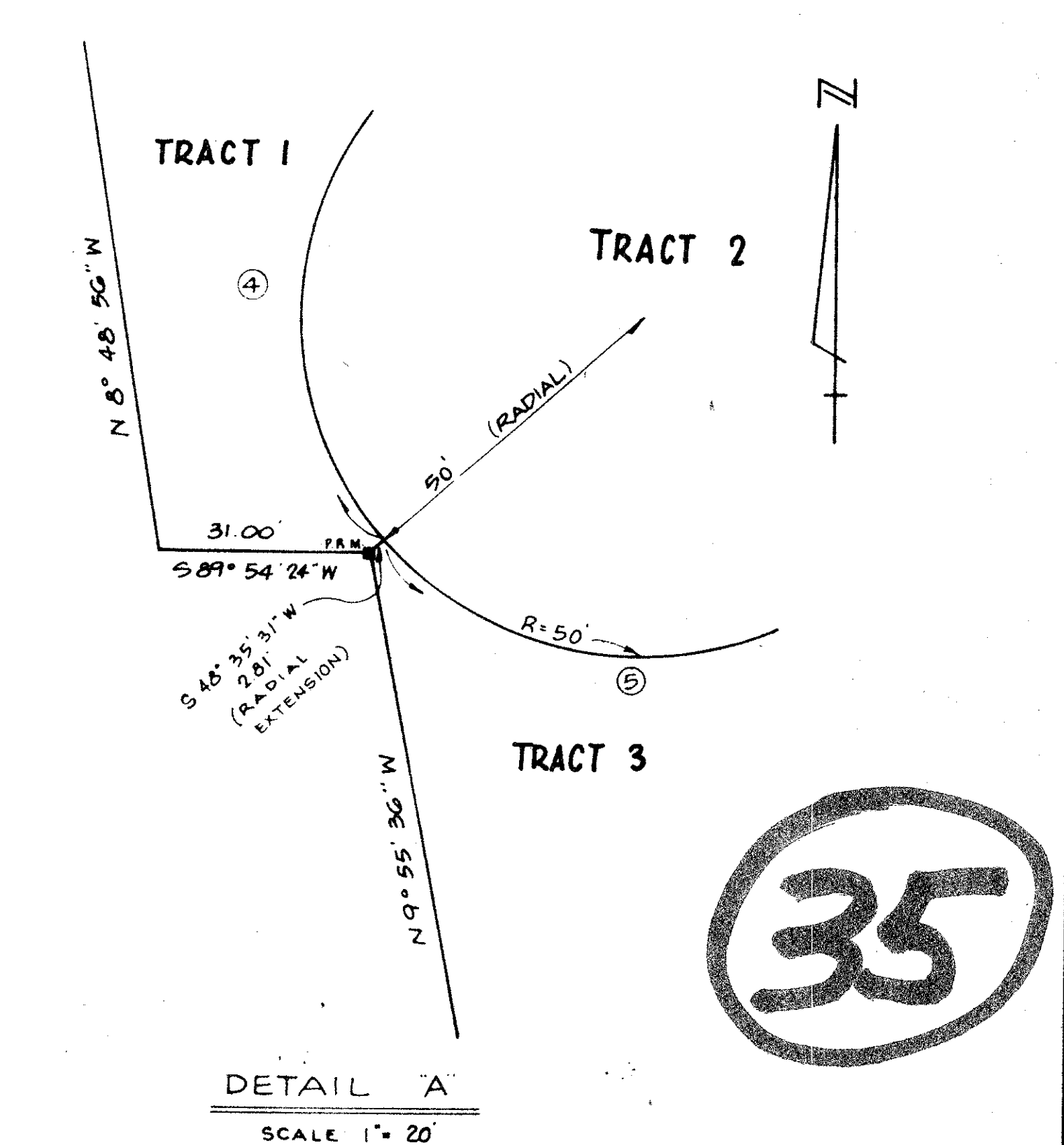
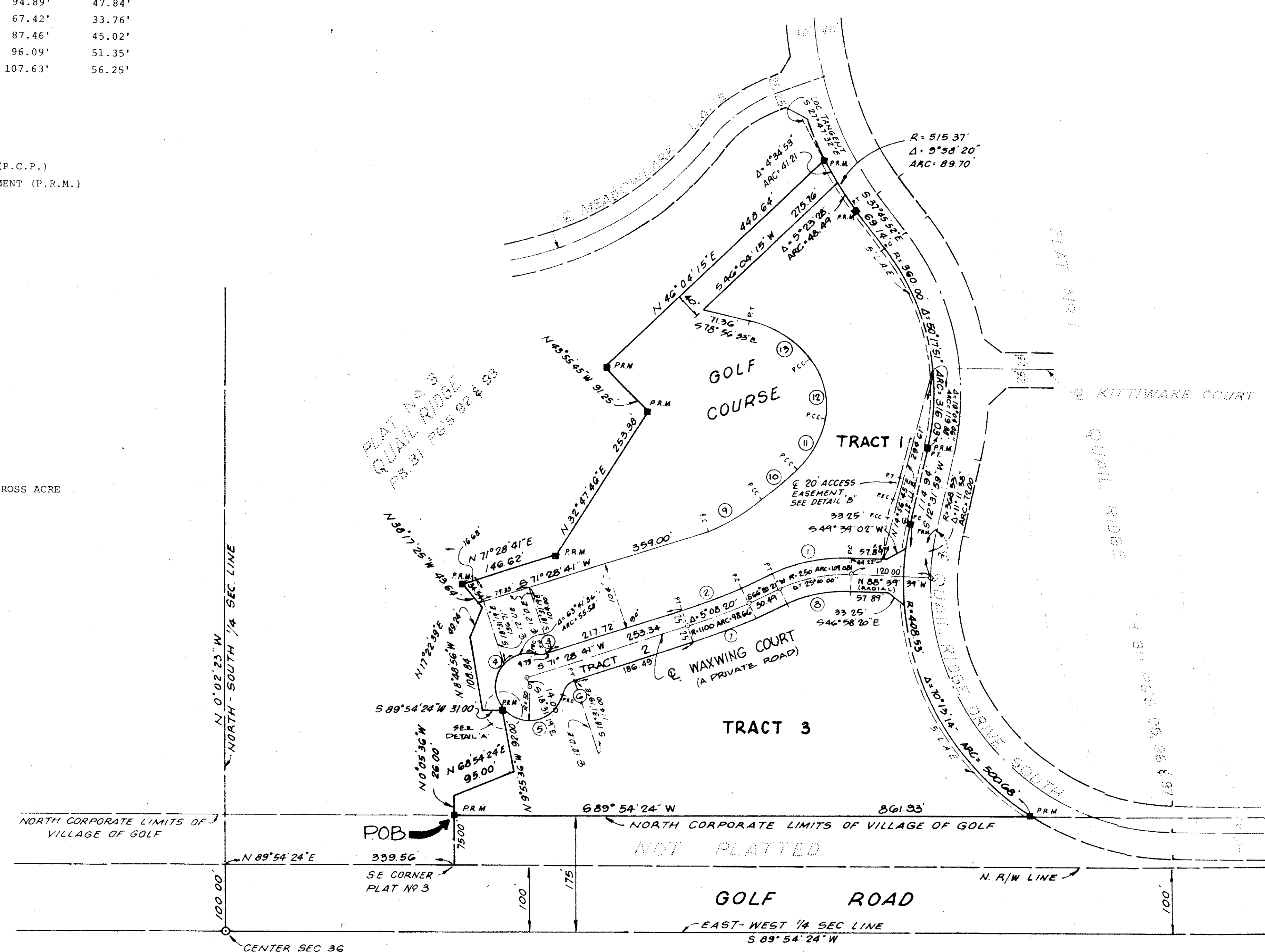
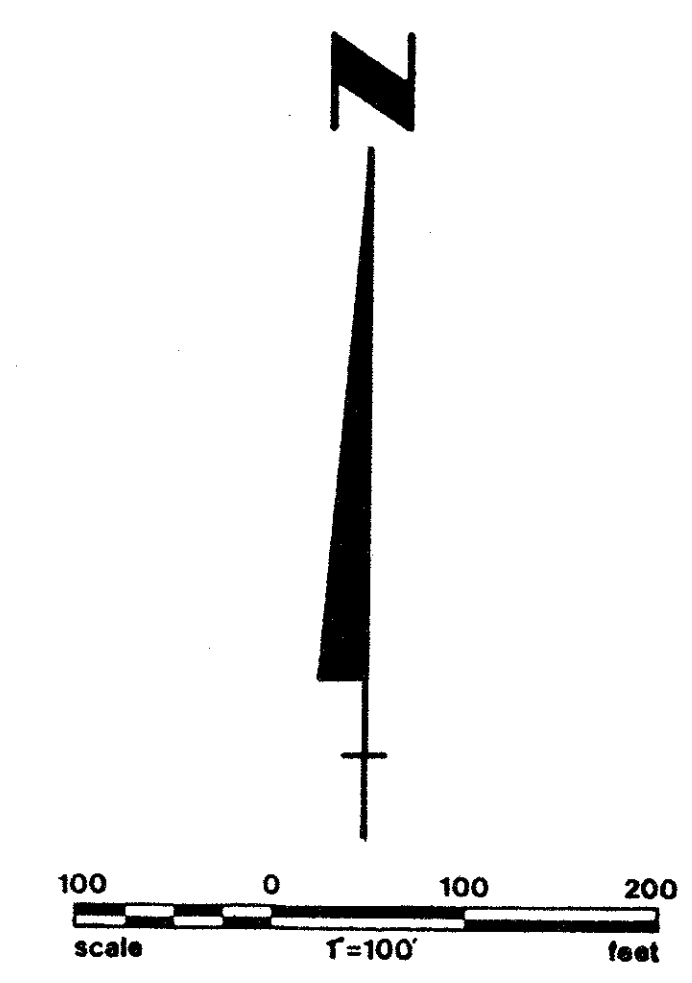
NOTES:

- = PERMANENT CONTROL POINT (P.C.P.)
- = PERMANENT REFERENCE MONUMENT (P.R.M.)
- D.E. = DRAINAGE EASEMENT
- U.E. = UTILITY EASEMENT
- L.A.E. = LIMITED ACCESS EASEMENT

MINIMUM SETBACK REQUIREMENTS

- FRONT 25 FEET
- SIDE (interior) 15 FEET
- SIDE (corner) 25 FEET
- REAR 25 FEET

- AREA TRACT 1 = 3.518 ACRES
- AREA TRACT 2 = 0.821 ACRES
- AREA TRACT 3 = 4.022 ACRES
- AREA GOLF COURSE = 2.461 ACRES
- TOTAL AREA = 10.822 ACRES
- TOTAL DWELLING UNITS = 15
- DENSITY = 1.39 D.U. PER GROSS ACRE



QUAIL RIDGE #12

35/182